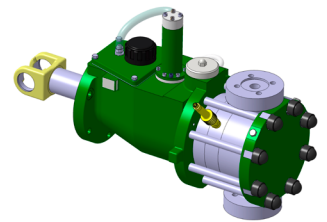
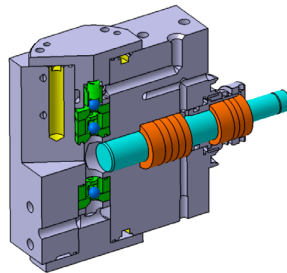
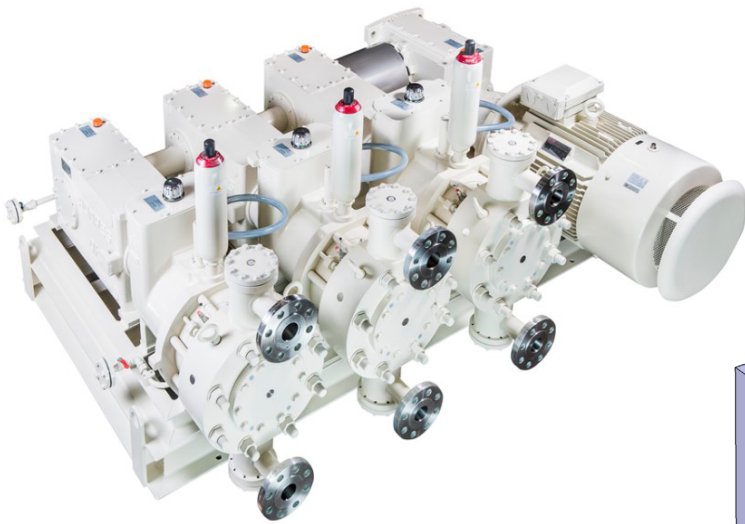


## VOLUMETRIC DOSING PUMP

Clextral designs and manufactures a complete range of dosing and injection volumetric pumps. They are used for different applications: petrochemistry, chemistry, oil & gas, food, paper mill and nuclear. To meet specific needs of its customers, Clextral supplies two types of pumps: with a diaphragm head and with a plunger piston.

The pumps are designed to work with a flow rate less than 1 l/h to over than 20 m<sup>3</sup>/h with a discharge pressure up to 500 bar. The pumping head(s) is/are driven by one/multiple mechanical part(s) powered by an electric motor.

Our pumps are designed according to API 674/675.



### MAIN ELEMENTS OF A DOSING PUMP

- Drive mechanism: electrical motor, flow rate adjustment
- Mechanical assembly: gear reducer (screw and wheel type), connecting rod
- Dosing head: plunger piston, single or double actuated diaphragms, suction and discharge valve boxes

### PLUNGER PISTON CHARACTERISTICS

- Used for neutral pumped liquid
- High pressure operation
- Easy maintenance
- Packings lubrication by the fluid
- Good quality-price ratio
- Material selection adapted to the application

### DIAPHRAGMS HEAD CHARACTERISTICS

- Excellent solution for specific/dangerous applications
- Integrated relief valve
- Automatic compensation
- Hydraulically driven
- Complete leakage tightness
- High safety and reliability
- Material selection adapted to the application

### OPTIONS / ACCESSORIES

- Diaphragm rupture detection: visual, by manometer, by pressostat, electric
- Pulsation dampener
- Shock absorber
- Actuators: electric, pneumatic
- Magnetic valve boxes
- Reversible valve boxes